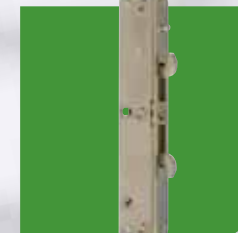
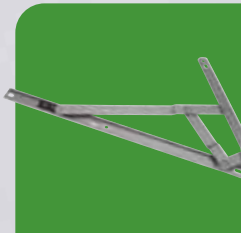


CASEMENT OPERATORS ■ SASH LOCKS ■ AWNING HINGES ■ RESIDENTIAL HARDWARE ■ SKYLIGHT OPERATORS



COMMERCIAL HARDWARE ■ WINDOW ACCESSORIES ■ PATIO DOOR LOCKSETS ■ DOUBLE-HUNG HARDWARE



Your customers will appreciate how Truth's products are engineered not only to complement each other visually and operationally but to help reduce your manufacturing and inventory costs.

Let us help you build a better window, patio door or skylight. You'll discover why working with Truth Hardware is **better from every perspective.**

**Make your windows,  
patio doors and skylights  
better from every perspective.**

More than a clear view and a fresh breeze, your windows, patio doors and skylights provide customers with a unique perspective of their world. Offer a better perspective with Truth Hardware.

Take advantage of our exceptional knowledge gained from more than 50 years of leading the window and door industry with the most technically advanced, reliable and aesthetically pleasing hardware. It's easy to see why builders, architects and homeowners agree that Truth's innovative products, resourcefulness and responsive service are unrivaled.

As you flip through our streamlined catalog, you'll find the most complete range of hardware available for residential and commercial use.

**Learn more at [TRUTH.COM](http://TRUTH.COM)**

**TABLE OF CONTENTS**

**Hinged Window**  
Operators ..... 2-3  
Skylight & Motorized Operators..... 4  
Hinge Systems ..... 5  
Sash Locks ..... 6-7

**Sliding Window**  
Locks & Accessories ..... 8-9

**Patio Door**  
Handles ..... 10-11  
Rollers & Mortise Locks ..... 12-13

**Commercial**  
Operators ..... 14-15  
Hinges & Locks ..... 16-17

Finishes..... 18-19  
Warranty & Terms..... 20  
Green Mission ..... 21





## HINGED WINDOW



## Operators

### Encore®

### Style Plus Performance

Encore Operators give you all the strength and performance characteristics of Maxim, but with the flexibility of a snap-fit cover and streamlined full-flip folding handle (*see next page*) that eliminates collapse during operation. 33% less effort to operate than previous operators. Designed to use the same mounting location as the Maxim system. Stainless steel components are available for coastal applications. Complements the Encore Multi-Point Locking System (*page 7*).



### Maxim®

### Strength and Performance

Exceptional Maxim Operators provide maximum performance to open and close larger windows with 33% less effort than previous operators. These operators feature a sealable housing to reduce water and air infiltration without the use of caulk or additional sealant. Available in a full range of operator styles, Maxim helps reduce manufacturing and inventory costs by using the same operator mounting location on every window size. An optional folding handle can be added. Stainless steel packages are available for demanding coastal applications. Developed as a system with Maxim Hinges and Locks to ensure maximum efficiency (*pages 5 & 6*).



### EntryGard®

### Versatility and Ease

Opening windows with the EntryGard system is smooth and easy. These operators offer removable covers as standard. Multiple casement and awning operator configurations are available to fit your window needs. Developed as a system with EntryGard Sash Locks to ensure maximum efficiency (*page 6*). Upgrade to EntryGard's full-flip folding handle operator (*page 7*).



### Ellipse®

### Practical and Sustainable

Ellipse's unique case design complements the smooth contour styling of the Maxim family with the mounting and mechanical features of our traditional operators. A special lip around the operator's case accepts a gasket, which helps achieve higher water and air performance rating without caulking.



1 Encore Operator

### Encore & Maxim Selection Guidelines

<b>Dual Arm Operator</b>	for large casements—up to 40" x 84" frame/96 lb. sash, supports washability and egress applications
<b>Dyad Operator</b>	for narrow windows—16"-32" wide casements—up to 72" frame/55 lb. sash
<b>Reverse Dyad Operator</b>	for 12"-24" wide windows and specialty windows (i.e., round tops, half round, trapezoid, garden, octagon, & windows that use butt hinges or 4-Bar Hinges)
<b>Single Arm Operator</b>	for 20"-32" wide casements and specialty windows where egress is required
<b>Awning Operator</b>	for frame widths 20"-60" wide
<b>Single Arm Awning Operator</b>	for narrow windows or those with a smaller profile cavity
<b>Low Profile Dyad Operator</b>	for 12"-24" side casements (Available in rear mount version only)

Product Configuration	Encore	Maxim	EntryGard	Ellipse	Traditional
Dual Arm	•	•	•		
Dual Arm: Low Profile	•	•			
Single Arm	•	•	•	•	•
Single Arm: Low Profile	•	•			
Dyad	•	•	•	•	•
Dyad: Low Profile	•	•			
Reverse Dyad	•	•			
Reverse Dyad: Low Profile	•	•			
Awning	•	•	•	•	•
Awning: Narrow	•	•			

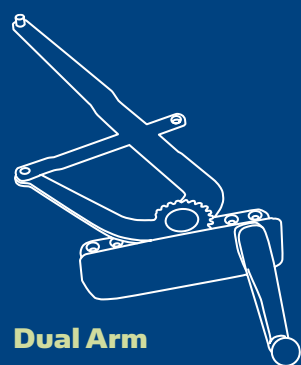
See [TRUTH.COM](https://www.truth.com) for complete product specifications

### Encore® Handle/Cover Options

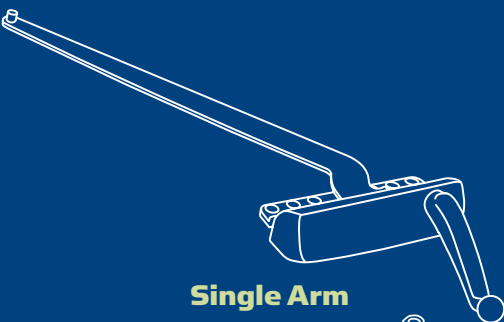
Differentiate your window line by taking advantage of Encore's unique cover and handle designs. Encore's full-flip folding handle recesses in the operator cover—giving windows a smooth, contemporary look—and eliminating interference with curtains and blinds. The snap-fit cover removes easily for painting and staining of window frame.



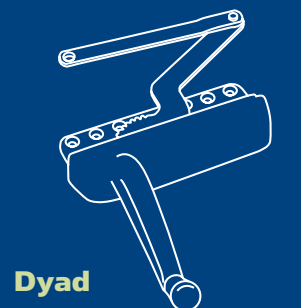
### Four Distinct Product Options



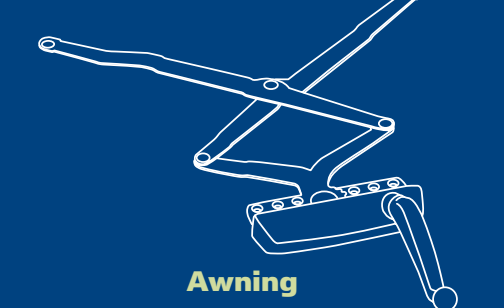
Dual Arm



Single Arm



Dyad



Awning

If you are designing a new window please contact Truth's highly trained Technical Services team. Truth can assist you with the selection of the appropriate hardware to meet your specific performance requirements as well as provide you with detailed application drawings.



## HINGED WINDOW

### The Encore® System

Designed as an integrated system, Encore Operators and locks provide unmatched elegance and performance. With a time-proven design, Encore products stand out in beauty while enhancing the window's overall appearance.



**1** Innovative **Encore Operators** are distinctive in appearance, performance and user-friendliness. Known for its full-flip folding handle and ease of operation, Encore operators fit a wider range of profiles (fiberglass, aluminum, steel) and both wood and PVC window types. Encore incorporates all the same strength and performance characteristics of Maxim operators.

**2** Designed to work in tandem with Encore operators, **Encore Multi-Point Locks** provide a complete locking system for casement and awning windows including round tops. A construction handle allows operation prior to finishing. Encore locks have fewer parts, hold 400 lbs. per lock point and are more resistant to insect and light infiltration. Providing years of trouble-free operation, Encore locks bring innovation to a new level.

For product specs visit **TRUTH.COM**



## Skylight & Motorized Operators

### Marvel™ Motorized Operator

Versatile Control

This motorized system is designed for awning windows and skylights that weigh up to 90 lbs. Using a standard 110 volt household current, the Marvel system allows operation of multiple units from one control switch. No transformer is required. A durable double-link chain opens windows and skylights up to 9.5". Marvel Motorized Operators come with mounting brackets that secure the operator to the center of the window, making this system one of the easiest to install. The Marvel system is designed to work on windows with properly-sized counter-balance hinges. ANSI/UL 325 and CAN/CSA C22.2 certified.

### Sentry II® WLS Motor System

Innovative Ease

A sleek design and quiet motor are engineered into this exciting digitally-motorized system. The Sentry II WLS system retrofits casement or awning windows formerly operated by Truth hand cranks. A power conversion accepts direct connection of line voltages. Power protected memory eliminates the need to reset the motor after a power outage. The Sentry II WLS System has a rain sensor which automatically closes the window at the first sign of moisture. Building automation systems can be easily connected. Designed to work alongside the Sentry 2000® Motorized Sash Lock (page 7).

### Sentry II® HS Motor System

Powerful and Smart

This digital system is designed for heavy skylights. Twice the strength of the Sentry II WLS model, the HS system features a hatch weight of 160 lbs. A power conversion built right into the control package accepts direct connection of line voltages. Power-protected memory eliminates the need to reset the motor after a power outage. Building automation systems can be easily connected. Also includes rain sensor.

### Manual Skylight Operator

Efficient and Accommodating

Compatible with wood, metal or vinyl skylights, Truth's Manual Skylight Operators are easy to install, simple to use and can lift up to 140 lbs. with minimal effort. Strong plastic case liner keeps the chain and sprocket sliding smoothly, making windows easy to open. Hardened steel sprocket and chain provide years of noise-free operation. Straight Drive and Angle Drive are available along with various hand or pole crank options.

## Hinge Systems

### Maxim® Hinge

Maxim Casement Hinges vent large casement windows (up to 40" x 84") and provide 1.5" more washability than Truth's 10" casement hinges for easier cleaning from the inside. An adjustment feature built into the hinge allows for simple realignment. Maxim hinges have a notched track to clear corner welds in vinyl window frames. Available in assembled or knocked down.

Designed to complement Maxim and Encore Operators and Locks (See pages 2 & 6).

### Series 13 Awning Hinge

Truth's Awning Hinge System has adjustable friction screws which allow users to customize the effort required to open and close awning windows. As they open, awning hinges balance a sash, making for smooth effortless operation. A delrin shoe with stainless steel reinforcement provides continuous, fluid action with solid support.

Also available: corrosion-resistant non-magnetic stainless steel package. Optional adjustable stud available.

### Series 14 Casement Hinge

Truth's adjustable concealed hinge allows quick sash realignment without disconnecting support arms. A delrin shoe with stainless steel insert provides strong performance with smooth operation. A stop feature prevents windows from opening past 90°. Available in assembled or knocked down versions and in 10" or 14" lengths. Various models are available to provide washability and egress options. Also available in stainless steel.

### Butt Hinges

Designed to provide maximum egress opening on casement windows, Butt Hinges are popular options on round-top and trapezoid style windows. Available in non-magnetic stainless steel.

### 37/99 Series Sash Control Devices

37/99 Sash Control Devices have two functions: adjusting and limiting. By tightening a screw in a sliding brass shoe, users can easily adjust the tension required to open and close the window. When used as a limiter, Sash Control Devices can restrict the opening on projected or casement windows. Sash Control Devices stop vents at a safety position and help prevent damage to casement and awning windows under high winds. A variety of track and arm lengths are available.

### Snubbers

Truth Hardware offers a full line of snubbers to meet all your window design needs. Compression snubbers prevent bowing of tall casement or wide awning windows. Negative air snubbers help increase the negative air pressure rating of windows. Please consult Truth Hardware's experienced Technical Service staff to determine which snubber is best for your application. Available in steel or stainless steel.

### Sash Ramps

When sash sag is an issue, Truth's Sash Ramps help lift the sash back into position. Strong and resilient Sash Ramps help support the sash in the closed position.

### Hinge Stops

Sash Limiters restrict sash opening to help prevent wind damage on casement or awning units and operating hardware. Sash Limiters are generally used in high wind environments or second story and higher window applications.

Truth offers a wide range of tie bars, screws, brackets, tracks and keepers in various sizes to help you build a better window. Please consult your sales rep for more information.



## HINGED WINDOW

### The Maxim® System

Offering exceptional operators, locks and hinges, the innovative Maxim system exceeds maximum expectations at every turn. The three components are engineered together to address the unique needs of the larger casement window. Designed as an integrated system, Maxim ensures the most attractive, easiest operating and highest performing windows available while reducing manufacturing cost.



**1 Maxim Operators** open and close with incredible ease. With a sealable housing to reduce air and water infiltration, these highly efficient Maxim operators come in a wide-range of models to fit a wide variety of window systems.

**2 Lock better** results into place with **Maxim Sash Locks**. Available in multi- and single-point, these attractive, smooth action locks complement Maxim's operators for enduring security.

**3 Maxim Hinges** lead the industry in durable performance and flexibility with both washability and egress models available.



## Sash Locks

### Maxim® Multi-Point & Single-Point Total Assurance

Solid and secure locking for vinyl, aluminum, and fiberglass window systems. With Multi-Point for casement and Single-Point for awning or casements, this advanced locking system complements Maxim Operators & Hinges (pages 2 & 5). Whether a right- or left-hand window, this system utilizes a non-handed design to help reduce inventory. The lock-to-tie bar attachment makes installation fast and easy. Maxim's "zippered locking effect" assures engagement of the top lock point. With .625" of reach out capability, the window can be locked without being completely closed.

### 24 Series Locking Handle Discreet Control

24 Series Single Point Locking Handles complement a wide variety of vinyl, aluminum and fiberglass window applications. For casement applications with a hard-to-reach second locking point, some handles use a tandem lock bar. Offers .437" pull-in and is available in face-mounted and rear-mounted styles.

### HomeGard® Convenient Security

HomeGard Sash Locks are a perfect low-profile lock option for windows with smaller side stops. Featuring .625" pull-in, HomeGard locks offer a strong detent which consistently provides a more secure feel during lock up. HomeGard locks can withstand negative air pressure of 275 lbs. per lock.

### EntryGard® Reliable Strength

EntryGard Sash Locks for casement and awning windows are designed to withstand up to 200 lbs. of force per lock point. Tandem locking is available for taller casements with a hard-to-reach second lock point. Available in handed or non-handed models, EntryGard Locks feature a generous .625" pull-in of the sash. EntryGard locks work best with their companion EntryGard Operators (page 2).

### Low Profile Sash Lock Solid Versatility

With a clean low-profile design, these locks withstand 250 lbs. of forced entry per lock. Low profile sash locks offer .625" pull-in and tandem locking for taller window lock applications.

### Encore® Multi-Point Locking System

This fully concealed lock system, for casement, awning and round-top windows, is designed to accompany Encore Operators (page 2). The Encore System fits a wide variety of wood windows and some select vinyl and fiberglass window systems. A construction handle allows operation prior to finishing the window. Tie bars offer 1-3 locking points and feature pre-located guides, meaning fewer screws and fewer parts to simplify hardware installation. Encore's interchangeable handle and escutcheon allow anyone to easily change color and style.



### Mirage® Concealed Multi-Point Locking System

The true beauty is what you can't see. Mirage's Concealed Locks for wood windows are so thin; they're barely noticeable. All locking points are concealed to create a clean look for your window system. The handle and escutcheon are removable for painting or staining wood trim. The tie bar guides are pre-located for quick and easy installation. Mirage's Multi-Point Locking System has an exceptional .625" pull-in and can withstand 245 lbs. of force per locking point.



### Sentry 2000 Motorized Sash Lock

Sentry 2000's Motorized Sash Lock fits any wood casement or awning window designed for use with any Truth case style lock. For maximum security, the system locks windows sequentially in two different points. In addition, Sentry 2000 features a visual indicator that shows when the locks are fastened. Models are sold with an eight-foot cable which runs from the lock to the operator motor.



### EntryGard's Easy Upgrade

Thanks to EntryGard's standard removable covers, manufacturers can give traditional EntryGard operators a stylish upgrade without having to replace the whole system. EntryGard's sleek full-flip folding handle eliminates interference with curtains and blinds. EntryGard high-performing operators are available in a variety of colors and finishes.

### EntryGard Handle Options



### 15 Series Folding Handle

Truth also offers a folding handle and removable cover option for our 15 Series Traditional and Ellipse Casement Operators.



For product specs visit **TRUTH.COM**

For product specs visit **TRUTH.COM**



## Locks & Accessories

### 9200 Series

Endless Options

9200 Series Sash Locks have bases with or without alignment lugs which help prevent shifting of the sash. For a tighter seal, a variety of locking cams are available. With various mounting-hole patterns to choose from, 9200 Series Locks have a number of Top Mount and Face Mount options. Depending on window design and available space, some windows are better suited for narrower keepers or even face-mounted varieties.



### Trimline™

Trustworthy and Firm

Featuring a low-profile design for maximum egress opening, Trimline Cam Locks have pull-in and lifting capabilities comparable to EntryGard. When locked, meeting rails are pulled tightly together, decreasing air infiltration. Trimline features an innovative spring design, which holds the handle in both the locked and unlocked positions. For locks designed with alignment lugs, a positive sash alignment feature prevents shifting of the sash. An improved detent in the handle clearly indicates when the cam has completed its travel.



### EntryGard®

Strong and Durable

EntryGard Cam Locks feature a protective back plate and an internal cam which produces a .125" pull-in with a .156" lifting ability. When locked, meeting rails are pulled tightly together, decreasing air infiltration. EntryGard's snap-back lock draws the cam in when handle motion is within 30° of the open position. The spring action eliminates cam exposure when partially open. Made from high-pressure, corrosion-resistant, die-cast zinc. Available with or without alignment lugs. Made with the same exceptional engineering platform as EntryGard Operators (page 2).



### 9400 Series

Reliable Protector

9400 Series Sash Locks feature one of the most popular locking designs for single/double-hung windows. An internal cam eliminates unsightly paint abrasions caused by recurring contact between the cam and keeper. Internal cams are handed and come in various sizes that relate to the amount of pull-in/reach-out and sash lift. Also available are tapered nesting lugs, which help guide the lock to the keeper. Available with or without alignment lugs.



### 9950 Series

Prominent and Fresh

Truth's 9950 Series Locks, with concealed keepers, are an exceptional way to accent your windows. Engineered with a fresh style and streamlined design that conceals the keeper under the housing, 9950 Series Locks have durable, scratch-resistant coatings and are offered in a wide range of decorative plated finishes.



### 700 Series

Attractive and Reliable

Four designs within the 700 Series family of locks each offer a distinct appearance with improved detent and a slimmer, low-profile for maximum egress opening. These locks feature a forgiving cam which indicates when the lock and keeper are engaged. Identical 2.062" center-to-center hole spacing on the lock and keepers make 700 Series Locks interchangeable with existing designs. Locks produce a .105" lifting ability.



### Positive Action Lock Systems

Truth's Positive Action Lock (PAL) Systems are some of the most versatile and easy to operate locking systems in the marketplace today. A simple movement of the locking tab disengages the lock allowing the sash to move freely. When the window is closed the PAL System automatically locks, securing the window without having to manipulate the lock again. These locks can be used with or without a keeper depending upon the window's design and the lock style.



The **New PAL System** is smaller, sleeker and can be mounted surface or flush.



**Original PAL System** is preferred in retirement housing.



**Easy lock** Automatically locks when window is closed.



**No keeper required**



**Easy-to-see security** Position of button conveys if window is locked.



### New Tilt Latches

With several variations to choose from, Truth's Tilt Latches are engineered with features to fit almost all window profiles. Truth's revolutionary snap-in mount and top-mounted fastener affords dependable operation with secure methods for installation.



### Sash Lifts

Designed to complement Truth's 1702 Series Restoration Locks, Truth Sash Lifts provide easy opening and closing of double-hung or sliding windows. With a traditional finger-pull look, Sash Lifts encourage window lifting from the bottom, putting less stress on the sash.



### 4233-1000 Window Roller

Available with steel wheels and mounted into a sturdy nylon case, Truth Window Rollers create almost effortless travel for slider windows. Rated for up to a 30 lb. sash, Window Rollers provide long-lasting reliable service.



If you are designing a new window please contact Truth's highly trained Technical Services team. Truth can assist you with the selection of the appropriate hardware to meet your specific performance requirements as well as provide you with detailed application drawings.



## The Fusion™ System

Double-hung hardware just shifted from ordinary to exceptional. Give windows the innovation they deserve with Fusion. This dependable system, adjustable for any size window, is the most versatile combination lock and tilt latch available today.

Fusion offers a push-on cover with a low-profile design and no visible screws. Fusion latches are non-handed and hidden into the check rail for a streamlined appearance. Fusion's lock and tilt latch release is triggered by one mechanism, giving users the option of using single or multiple locks.



Locked position



Unlocked position



Lever position for retracting the tilt latches

## PATIO DOOR



## Handles/Hinges

### Sentry™ Handles

The Sentry Hinged Patio Door System is filled with options. From traditional to contemporary, there are distinctly different handle designs with plated or painted finishes to help customize your look. A North American 90° thumbturn above the handle allows for easier access to the key cylinder.

### Sentry™ Adjustable Hinges

The Sentry Adjustable Guide and Set Hinges provide vertical and horizontal adjustment for a perfect fit. The Sentry Hinges are manufactured from extruded brass or aluminum for superior strength and excellent corrosion resistance. Set and Guide Hinges are easily adjusted using same hex key.

### 40.62 Series

Sleek and easy to grasp, Truth's 40.62 Series Interior Handles incorporate an integrated design of the handle and escutcheon, providing a clean and elegant appearance. Compatible with wood, vinyl or aluminum doors, 40.62 Series Handles are combined with Truth's standard outside pulls.

### 2995 Series

2995 Series Handles, with a C-shape design, are one of the most popular handle sets. 2995's are non-handed, interior/exterior, and can be installed on aluminum, vinyl or wood framed patio doors. Available with or without a lock cylinder. Create a customized appearance and price points combining an inside handle with Truth's standard outside pulls.



Shoot bolts can be added to hook or tongue versions to improve DP performance

### Sentry™ Series

Truth's new Sentry Multi-Point Hinged Patio Door Hardware System combines innovative features with optimal security. With intuitive functionality like the 90° thumbturn located above the handle and high performance adjustable hinges, Sentry easily adapts to your current door system.

Tongue option fits standard 16 mm or 20 mm eurogrooves without additional remote lock processing

Reversible latch and self-positioning anti-slam device provide a non-handed system

Hook Bolt option creates secure lock-up



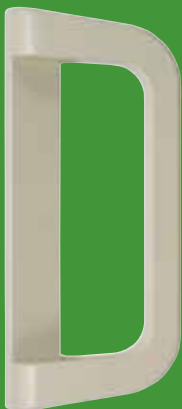
### Signature™ Series

Signature Series Handles are beautifully designed for patio doors of all sizes. Customize the look of your door with 13" or 10" long escutcheons that come in four different styles. Locking point can be located above or within the handle. Industry standard mounting hole spacing makes Signature handles an easy upgrade to your current system.



### Allure™ Series

With its distinctive styling, Allure's one-piece handles enhance any size patio door. Compatible with industry standard single- or multi-point mortise locks, Allure provides remarkable strength and reliability. Allure Handles are available with optional key lock cylinders, located in the center or offset positions within the handle.



### 2992 Series

The attractive 2992 Series patio door handles are made of durable single-piece die-cast construction. 2992 series outside handles are available with or without lock cylinder and may be used as outside pulls.



### 2939/2949 Series

Truth Hardware's 2939/2949 series **exterior** pulls are a low-profile option for exterior patio doors. These outside pulls can accommodate a key lock cylinder for locking and unlocking from the outside.

### Signature™ Series

The Signature Series—Truth's breathtaking handle sets for the sliding patio door market. Elegant in style and revolutionary in design, this unique set of distinct handles will enhance any size patio door. The unmatched versatility and "signature" contour shape defines this premier handle set.

1

Custom handle is easy to grasp.

2

Locking point can be located above or within handle.

3

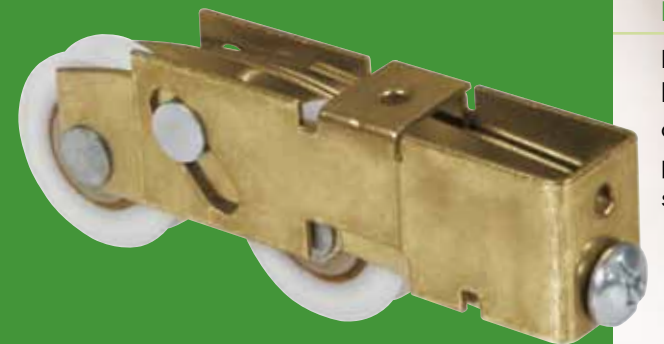
13" and 10" long escutcheon available for larger and smaller patio doors.





### Side Adjust Tandem Rollers Quality and Endurance

Side Adjust Tandem Rollers feature radial ball bearings that are manufactured by Truth Hardware to provide the highest quality assemblies. Machined from high-quality solid steel, Truth's bearing raceways are heat-treated and plated for wear and corrosion resistance. This method produces long-lasting true running rollers capable of carrying the heaviest loads. Wheels are offered in various diameters with a choice of steel, stainless steel or nylon rolling surfaces.



### End Adjust Tandem Rollers Dependable and True

End Adjust Tandem Rollers are equipped with full race, permanently lubricated radial ball bearings that are labyrinth-shielded to protect from dust and moisture. Ball bearings are manufactured by Truth Hardware to provide the highest quality assemblies. End Adjust Tandem Rollers can support doors up to 350 lbs.



### Screen Rollers Resilient and Quiet

Truth Hardware offers a variety of tension Screen Rollers for use on screen doors. Screen Rollers are available with high quality radial ball bearing-equipped rollers and nylon wheels for long-lasting quiet performance. Most feature tension springs which keep rollers on track through downward pressure.



### Secondary Limiters Sturdy and Safe

Truth's Patio Door Limiters easily engage and release for added security. Spring loaded and foot operated, Secondary Limiters can withstand an impressive forced entry attempt of 400 lbs. Limiters easily mount to the bottom rail of sliding doors.



### Single Point Mortise Locks Efficient and Easy

See for yourself why mounting hardware is regaining popularity in residential construction. Truth offers a wide variety of unique Mortise Locks for aluminum, vinyl and wood sliding patio doors. In addition to Truth's keepers, spacers and adapters, our Mortise Locks work with many of the fine line patio door handle sets that we offer.

## Rollers & Mortise Locks

### Nexus™ Mortise Locks Versatile and Strong

The Nexus Lock System from Truth Hardware is the latest in two-point and multi-point lockset options for sliding patio doors. Combining both versatility and ease of installation, the Nexus System is suitable for either wood or vinyl door applications. Two-point system is available in either stainless steel or carbon steel, while the Multi-Point System is offered in stainless steel as a standard. Each system has unique individually adjustable locking points to provide additional forgiveness and increased security.

### Nexus™ Multi-Point System

shown with three individually adjustable locking points.

### Nexus™ Two-Point System

- 1 Innovative anti-slam pin adjusts in and out with the hook adjustment to ensure that when the pin is engaged the hook will engage the keeper.
- 2 Intuitive adjustment feature clearly indicates how to horizontally adjust the lock hooks allowing for flexibility in installation.
- 3 Nexus Two-Point Mortise Locks are available in either a flush mount, face mount (16mm or 20mm euro groove) or recessed application. Face mount shown here.

If you are designing a new door please contact Truth's highly trained Technical Services team. Truth can assist you with the selection of the appropriate hardware to meet your specific performance requirements as well as provide you with detailed application drawings.



**Maxim®**

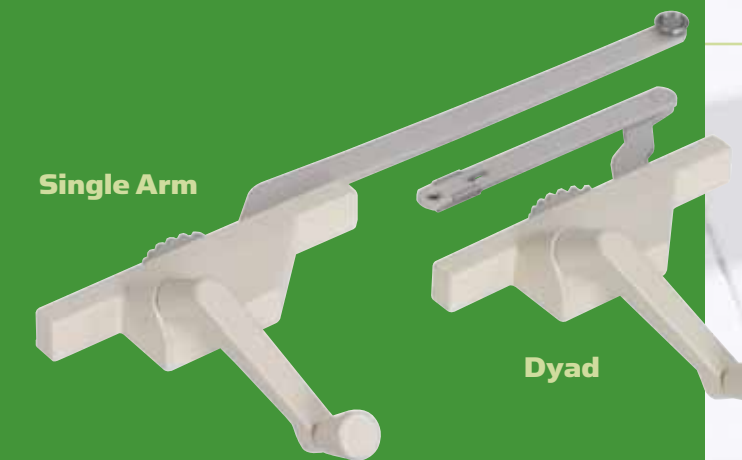
## Strength and Performance

Designed for use on larger casement and awning windows, Maxim Operators easily mount to thin wall profiles made of fiberglass, aluminum and steel. Many painted and plated options are available. The most common is Maxim's zinc die-cast case and handle. Maxim operators feature a sealable housing which minimizes damage, creates a stable mounting surface and reduces water, dust and air infiltration for smoother operation and longer life. Dual axis mounting is available on all models. Certified AAMA 904.1, Maxim Operators allow larger applications to meet ADA requirements. Operators work most efficiently as a system with Maxim locks (*page 17*).

**Encore®**

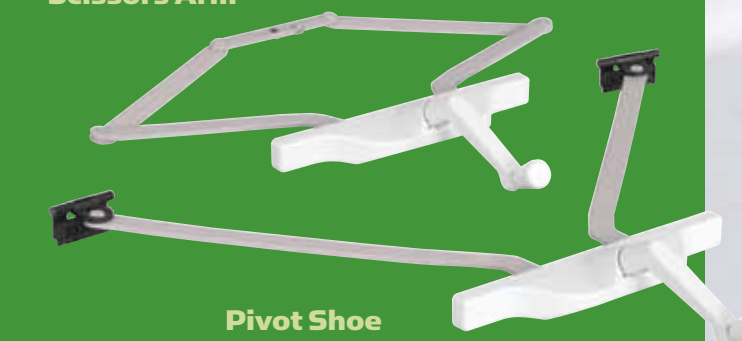
## Style Plus Performance

Encore operators provide all the strength and performance characteristics of Maxim, but with a removable snap-fit cover and streamlined full-flip folding handle which helps reduce inventory costs through non-color specific operators. Encore offers smaller sealable housing for reduced water and air infiltration. Enclosed gear train promotes smoother operation and longer life. Full-flip folding handle eliminates collapse during operation. Dual axis mounting is available on all models. Certified AAMA 904.1, Encore operators allow larger applications to meet ADA requirements.

**Single Arm****Dyad****23 Series**

## Contemporary and Versatile

The contemporary styling of 23 Series Operators complements windows of all varieties. Commercially handed **Single Arm** Operators open windows 90° and complement Truth's 4-Bar Hinges. **Dyad** operators provide smooth operation of casement and single vent awning windows with both types of Truth Concealed Casement Hinges. The detachable clip linkage allows these operators to disengage for easy assembly and installation.

**Scissors Arm****Pivot Shoe****22 Series**

## Sleek and Efficient

Truth's 22 Series Operators come in two special designs: Pivot Shoe and Scissors Arm. Designed for face-mounted applications or single vent awning windows, **Pivot Shoe Operators** pull windows smoothly from their corners and can open up to 10". **Scissors Arm Operators** are also designed for face-mounted applications to provide positive control of the sash in any position while producing a secure centered pull-in. A simple detach option disengages operators from the sash, providing easy installation and removal. Both 22 Series Operators are available in both front-mount and rear-mount styles.

## Casement &amp; Awning Operators

## Skylight &amp; Push Bar Operators

**Marvel™ Motorized Operator**

## Versatile Control

This motorized system is designed for awning windows and skylights that weigh up to 90 lbs. Using a 110-volt household current, the Marvel system allows operation of multiple units from one control switch. A durable double-link chain opens windows and skylights up to 9.5". Marvel Motorized Operators come with mounting brackets that secure the operator to the center of the window, making this system one of the easiest to install. Marvel Motorized Operators are designed to work on windows with a properly sized counter-balance hinge and operator. ANSI/UL 325 and CAN/CSA C22.2 certified.

**Sentry II® HS Motor System**

## Powerful and Smart

Designed for heavy skylights (160 lb. hatch weight), this digital system features a power conversion built right into the control package that accepts direct connection of line voltages. Power protected memory eliminates the need to reset the motor after a power outage. ETL listed and CE approved, the remote can control an infinite number of windows, skylights and even motorized blinds. The Sentry II HS Motor System features a rain sensor, which automatically closes skylights at the first sign of moisture. Available remote control utilizes rolling code technology to provide high security and peace of mind. A built-in thermostat allows skylights to open and close together.

**Manual Skylight Operator**

## Efficient and Accommodating

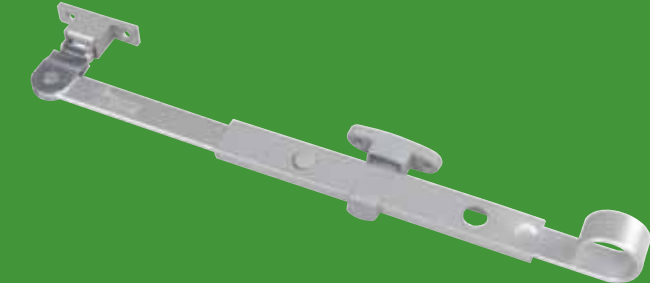
Compatible with wood, metal or vinyl skylights, Manual Skylight Operators are easy to install, simple to use and can lift up to 140 lbs. with minimal effort. Strong plastic case liner keeps the chain and sprocket sliding smoothly, making windows easy to open. Hardened steel chain is detachable at the sash for easy installation and provides years of noise-free operation. Straight Drive and Angle Drive are available along with standard and long handle versions.

**Push Bar Operator**

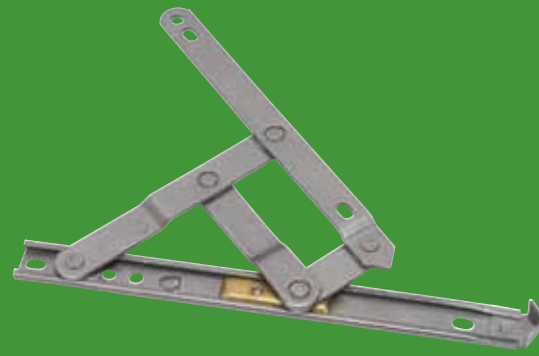
## Strong and Reliable

Telescoping Push Bar Operators are most commonly used for holding open outward-projected windows that are screened from the inside. The arm provides a generous window opening up to 14.5". The cams cover the nylon escutcheon ensuring the window is pulled tightly to the frame, eliminating air infiltration. To disengage, just push the index button on the operator arm.

If you are designing a new window please contact Truth's highly trained Technical Services team. Truth can assist you with the selection of the appropriate hardware to meet your specific performance requirements as well as provide you with detailed application drawings.







## Hinges

### 201/301 Series Standard & Heavy Duty 4-Bar Hinge

Non-handed 4-Bar Hinges are specially designed for casement, awning and projected vents with a lip on the outside edge. Standard 4-Bar Hinges are for lighter windows no heavier than 40 lbs. Heavy Duty 4-Bar Hinges are for commercial windows up to 200 lbs. 201/301 Series Hinges are manufactured with a black acetal or brass shoe. Truth's Standard Duty and Heavy Duty 4-Bar Hinges are available in both steel or stainless steel.



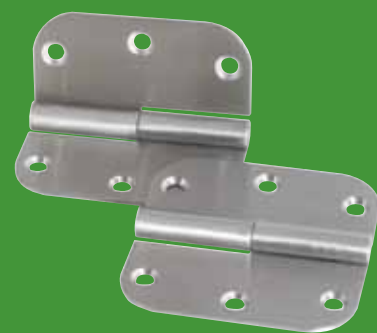
### 4-Bar Egress Hinge

Designed for casement windows, 222/333 Series Hinges can produce a 90° window opening. When fully open, the sash is positioned close to the side jamb to allow an average-sized person to escape in the event of an emergency. Non-handed and made of durable stainless steel, 4-Bar Egress Hinges allow outside vents to be washed from the inside. Standard Duty recommended for a maximum vent weight of 82 lbs; Heavy Duty: 158 lbs.



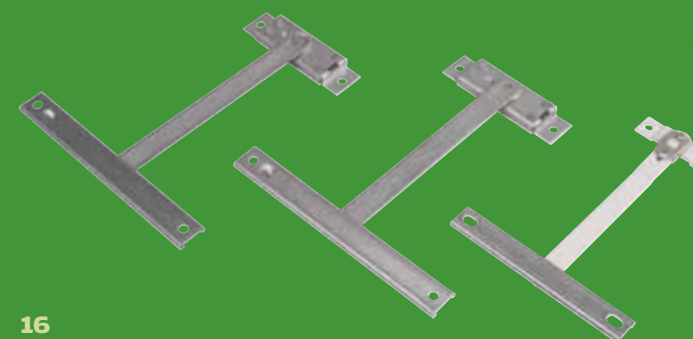
### 401/601 Series Stainless Steel 4-Bar Hinge

Designed for casement windows, 401 Series (standard) and 601 Series (heavy duty) stainless steel hinges produce a 90° window opening. 401/601 Series Hinges are designed to project vents as they pivot, avoiding interference between a lipped vent and frame.



### Butt Hinges

Designed to provide maximum egress opening, Butt Hinges are popular options on round tops or trapezoids. Unlike most exposed hinge systems, these hinges are partially concealed within the window's frame, making them tamper resistant. The loose hinge concept makes windows easy to install and maintenance free.



### Sash Control Devices

Truth's Sash Control Devices come in three varieties: Limit Devices, Friction Adjustors and Support Arms. Limit Devices restrict the opening on projected or casement windows. A variety of track and arm lengths are available. Friction Adjustors are used to add friction to hinges on projected windows. For top-hung windows, Support Arms are available in two models. The first opens to full extension and automatically locks into place. The second, designed to extend only 1.5", opens fully with the addition of a key. Once the key is removed, the arm automatically resets when closed.

## Locks

### Maxim® Multi-Point & Single-Point

Designed for casement and awning windows, Maxim Locks feature a progressive "zippered" locking effect which helps assure the top lock point always engages. Maxim Locks are non-handed to reduce inventory and feature an optional gasket around the base, ensuring a tight seal. On casement windows the addition of a lock point below the handle also improves lock-up. Maxim offers a single point system for awning windows using existing stainless steel keepers—no tie bars or guides required. Complements Maxim Operators (*page 14*).

### Locking Handles

Designed to complement a wide variety of vinyl, aluminum and fiberglass window applications, handles lock and unlock sashes when moved vertically. For casement applications that may have a hard-to-reach second locking point, some handles use a Tie Bar which allows the locking points to work in tandem. The nose has a slight taper, which improves keeper engagement and offers .437" pull-in.

### TrimLine & Pole Operated Cam Handle Locks

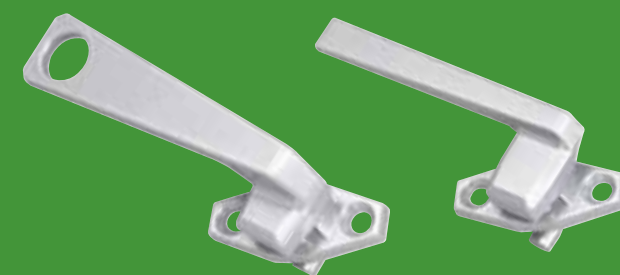
25 Series Locks feature a two-piece strike design with a wear-resistant black polyester insert for smooth operation. Inserts are available in various heights to assure tight lock-up. 25 Series Locks can withstand at least 300 lbs. of forced entry resistance per locking point. Rotating the handle 90° locks and unlocks the sash. With pole-operated locks, the hole in the handle allows users to operate the lock in elevated areas.

### TrimLine & Pole Operated Concealed Pawl Handle Locks

27 Series Locks feature a concealed pawl design that locks in-swinging windows from the inside. A wide range of concealed pawl and keeper designs accommodate most window styles. Pole-operated locks have a hole in the handle so users can operate locks in elevated areas. Rotating the handle 90° locks or unlocks the sash. Concealed Pawl locks are designed to increase both security and weather seal tightness. 27 Series locks withstand up to 150 lbs. of forced entry resistance per locking point.

### Custodial Locks

Spring-loaded and strong, 28 Series Custodial Locks provide tamper-resistant lock up. Rotating the key 90° locks or unlocks the sash. A slot in the housing requires a special key to operate the lock. One end of the key is removable in both the locked and unlocked positions; the other end—only in the locked position allowing the key to act as a handle when operating the vent. The key also acts as a handle when operating the vent. 28 Series Custodial Locks can withstand up to 300 lbs. of forced entry per locking point.





## A better perspective on finishes

Truth Hardware offers a full range of beautiful and durable finishes. Our state-of-the-art paint facilities ensure the highest quality surfaces from traditional painted finishes to designer decorative finishes. You can select from **more than 25 choices** to find the right finish for building a better window, patio door or skylight. With an emphasis on high quality and quick turnaround, Truth's finishes are better from every perspective.

Truth Hardware offers the same quality finishes on our complete line of locks, operators and patio door hardware.

For samples or more information, a Truth representative is ready to help you at **1-800-866-7884**.



Bright Brass (13)



Brushed Antique Chrome (98)



Satin Nickel (10)



Oil Rubbed Bronze (52)



Brushed Chrome (53)



Antique Brass (14)



Bright Chrome (35)



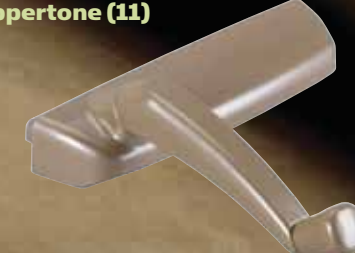
## Decorative Finishes

## Painted Finishes

Black (02)



Coppertone (11)



Beige (25)



Chestnut Bronze (23)



Aluminum (01)



Bright White (78)



Bronze (03)



Sahara Beige (41)



Snow White (42)



Faux Bronze (FB)



Sandstone (50)



White (38)



Clay (22)



Almond (CT)



White (32)



Gold (29)



Beige (24)



White (WC)



For product specs  
visit [TRUTH.COM](http://TRUTH.COM)



**Truth Hardware's Warranty  
for Window & Door Manufacturers & Authorized Distributors**

All Truth Hardware products, with the exception of electrical products\*, are warranted against defects in materials and workmanship for 10 years.

Truth Hardware's warranty is expressly limited to window & door manufacturers and Truth Hardware Authorized Distributors, who purchase Truth Hardware products for the purpose of resale, or use in the ordinary course of the buyers business, and may not be assigned or transferred.

This warranty does not cover normal wear or discoloration on finishes, or any product which has been improperly installed, abused, misused, worn out, altered, used for a purpose other than that for which it was intended, or in a manner inconsistent with any instructions regarding its use, nor does it cover corrosion related damage. This warranty only covers electrical products that are used to drive manual hardware systems (operators and hinges) manufactured by Truth Hardware.

THIS WARRANTY IS EXCLUSIVE. TRUTH HARDWARE MAKES NO OTHER WARRANTY OF ANY KIND WHATSOEVER, EXPRESS OR IMPLIED, WITH RESPECT TO THE PRODUCTS MANUFACTURED AND SOLD BY IT, WHETHER AS TO MERCHANTABILITY, FITNESS FOR A PARTICULAR PURPOSE, OR ANY OTHER MATTER. No agent, employee or representative of Truth Hardware has any authority to bind Truth Hardware to any affirmation, representation, or warranty concerning Truth Hardware products or parts, except stated herein.

If any product manufactured by Truth Hardware is found to be defective by Truth Hardware, in its sole judgment, Truth Hardware will, at its option, either repair or replace with the same, or a substantially equivalent replacement, for such defective product. Truth's liability is limited only to the replacement value of the hardware. THIS REMEDY SHALL BE THE EXCLUSIVE REMEDY AVAILABLE FOR ANY DEFECTS IN THE PRODUCTS MANUFACTURED AND SOLD BY TRUTH HARDWARE OR FOR DAMAGES RESULTING FROM ANY OTHER CAUSE WHATSOEVER, INCLUDING WITHOUT LIMITATION, TRUTH HARDWARE'S NEGLIGENCE. TRUTH HARDWARE SHALL NOT IN ANY EVENT BE LIABLE TO ANY BUYER FOR CONSEQUENTIAL, OR INCIDENTAL, OR PUNITIVE DAMAGES OF ANY KIND, OR FOR THE LABOR WHICH MAY BE REQUIRED FOR THE REPLACEMENT OF SAID PRODUCT, WHETHER FOR BREACH OF WARRANTY, NEGLIGENCE, ON THE BASIS OF STRICT LIABILITY, OR FOR ANY OTHER REASON.

The purpose of this exclusive remedy shall be to provide the window/door manufacturer, or Truth Hardware Authorized Distributor, with replacement of products, or parts, manufactured by Truth Hardware found to be defective in materials or workmanship, or negligently manufactured. This exclusive remedy shall not be deemed to have failed of its essential purpose so long as Truth Hardware is willing and able to repair or replace said defective products or parts in the prescribed manner.

*\*All Truth Hardware electrical products are warranted for one (1) year against defects in materials and workmanship.*

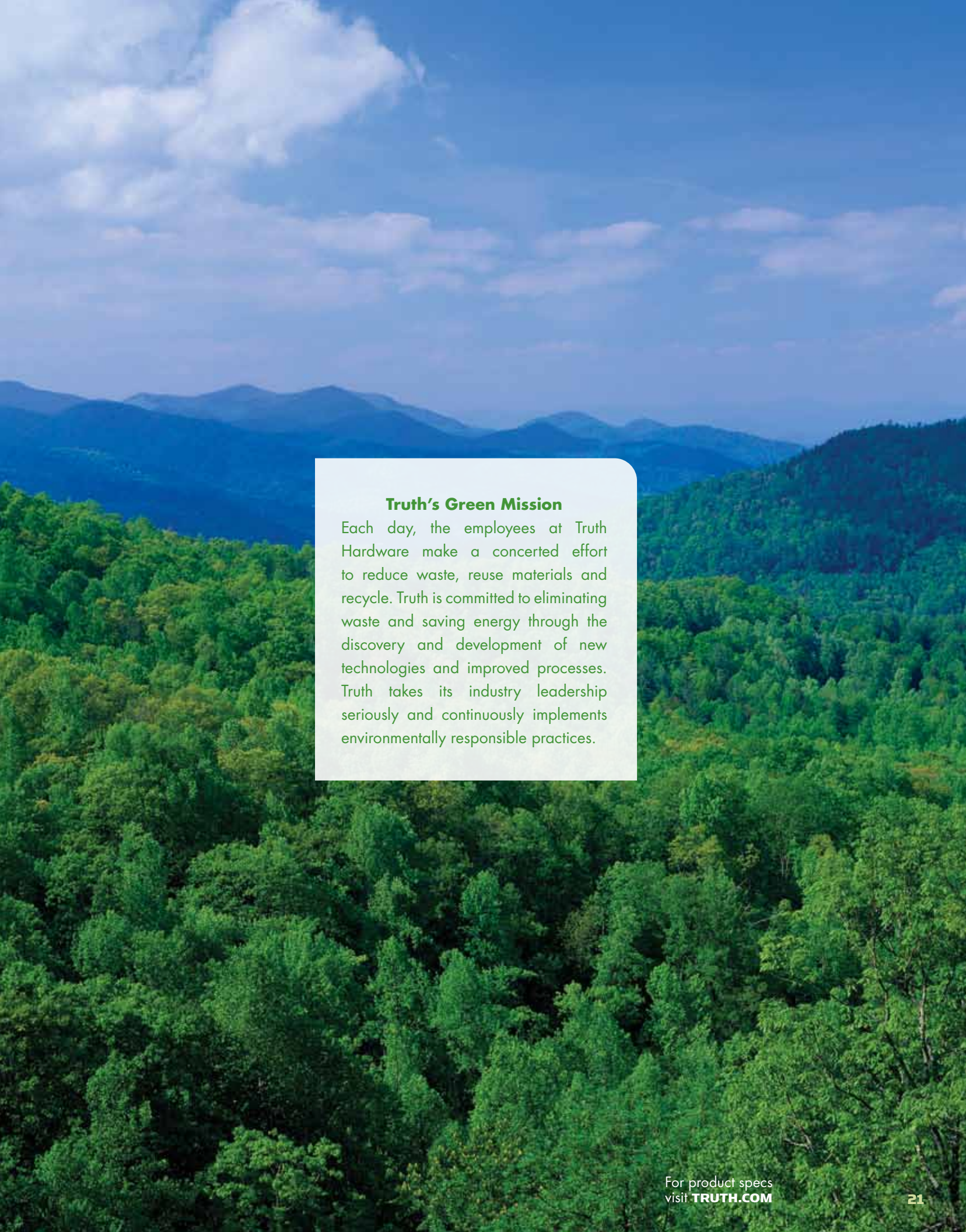
**Terms & Conditions of Sale**

**TERMS:** 1%/10 days - net 30 days on hardware purchases. Net 30 days on freight charges. Tooling invoice terms are available upon request.

**FREIGHT:** F.O.B. Factory

**CONDITIONS:** Initial orders, and all subsequent orders placed before credit is established with Truth Hardware, will be on a cash-in-advance or C.O.D. basis. Cash-in-advance orders will be entered by Truth Hardware upon the receipt of the order and payment. Pricing is determined at time of shipment.

**RETURN GOODS:** Authorization from our Sales Department is required in advance for all goods to be returned to Truth Hardware. Authorization will be granted in all cases of defective product or incorrect shipments due to an error on Truth Hardware's part. Truth Hardware may also, at its option, authorize the return of other goods subject to a 25% restocking charge and including and offsetting order equal in value to the amount of the return. Product considered for return must be standard product, built to current Truth Hardware manufacturing specifications, no older than the immediate past calendar year, clean, resalable, in full unopened cartons. The quantity to be returned cannot be excessive based on Truth Hardware's current level of sales and inventory position. Freight on all return goods must be prepaid to our plant and merchandise must be received within 30 days of date of authorization.

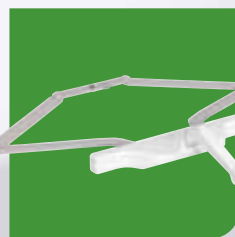
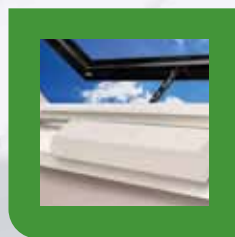
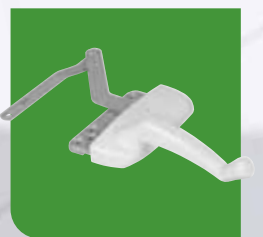


**Truth's Green Mission**

Each day, the employees at Truth Hardware make a concerted effort to reduce waste, reuse materials and recycle. Truth is committed to eliminating waste and saving energy through the discovery and development of new technologies and improved processes. Truth takes its industry leadership seriously and continuously implements environmentally responsible practices.



MOTORIZED LOCKS ■ AWNING LOCKS ■ CASEMENT HINGES ■ AWNING OPERATORS ■ PATIO DOOR HANDLES



PATIO DOOR HARDWARE ■ MOTORIZED OPERATORS ■ CASEMENT LOCKS ■ SLIDING WINDOW HARDWARE

## TRUTH HARDWARE

700 WEST BRIDGE STREET, OWATONNA, MN 55060

TEL 800.866.7884

FAX 507.451.5655

[TRUTH.COM](http://TRUTH.COM)